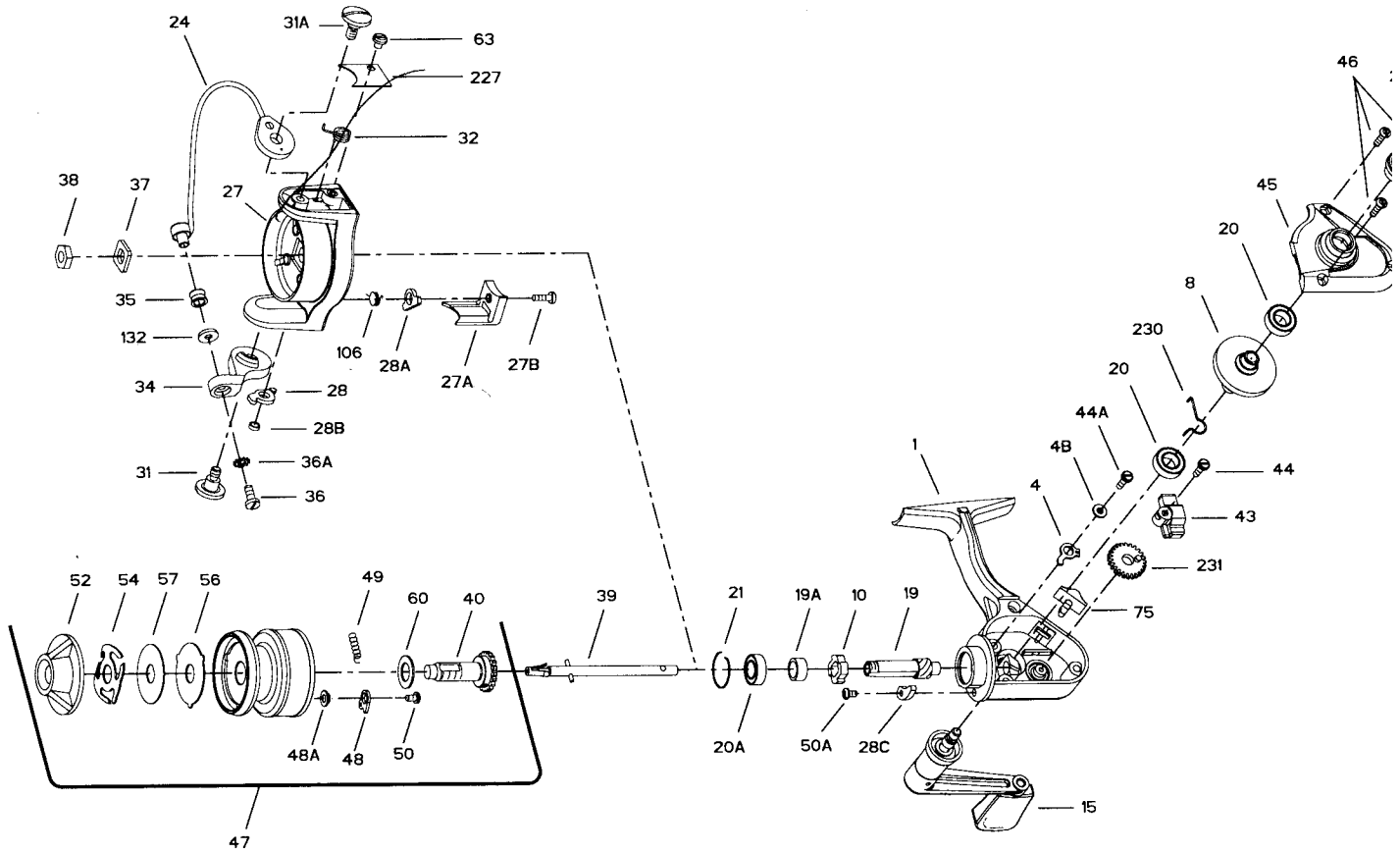




PARTS AND PRICE LIST FOR MODEL 4200SS



39N- SPOOL CLIPS CHANGED

Key No.	Part No.	Description	Price	Key No.	Part No.	Description	Price
1	1-4200	Housing	\$12.80	38	38-720	Rotor Cup Nut	.5
4	4-4200	Dog	1.50	39	39-4200	Spool Shaft Complete	3.4
4B	4B-4200	Dog Lever Bushing	.50	40	40-4200	Spool Sleeve Complete	2.7
8	8-4200	Main Gear Assembly	10.60	43	43-4200	Crosswind Block	1.5
10	10-4200	Ratchet	.90	44	44-4200	Crosswind Block Screw	.4
15	15-4200	Handle (Complete)	8.50	44A	46A-4300	Dog Screw	.4
19	19-4200	Pinion	10.60	45	45-4200	Housing Cover	2.9
19A	19A-4200	Pinion Spacer	.50	46	46-4300	Housing Cover Screw (3 req.)	.5
20	20-4200	Ball Bearing (Main Gear) (2 req.)	12.95	47	47-4200	Spool (Complete)	15.5
20A	55-4200	Ball Bearing (Pinion)	12.95	48	48N-4300	Click Tongue	.4
21	21-4200	Bearing Lock Ring	.40	48A	48A-4300	Click Tongue Washer	.4
24	24-420	Bail Wire Assembly	6.60	49	49-4300	Click Spring	.4
27	27-4200	Rotor Cup	5.90	50	63A-2.5FR	Click Spring Screw	.4
27A	27A-4200	Bail Trip Cover	1.10	50A	46A-4300	Trip Cam Screw	.4
27B	27B-420	Bail Trip Cover Screw	.50	52	52-716Z	Drag Knob	2.5
28	28-420	Trip Lever	1.70	54	54-4200	Drag Spring	1.5
28A	28A-440	Cam Lever	1.10	56	56-4200	Drag Washer HT100	1.1
28B	28B-4200	Trip Lever Bushing	.70	57	57-4200	Drag Washer-Metal	.5
28C	28C-4200	Trip Cam	1.10	60	60-716	Spool Sleeve Washer	.4
31	31-420	Bail Arm Screw	1.00	63	63-500S	Bail Spring Cover Screw	.1
31A	31A-420	Bail Cam Screw	1.10	75	75-4300	Eccentric Button	.1
32	32-420	Bail Spring	.90	106	106-5500	Cam Lever Spring	.1
34	34-420	Bail Arm	2.25	132	132-420	Roller Washer	.1
35	35-420	Line Roller	3.10	227	227-4300	Bail Spring Cover	.4
36	36-420	Bail Stud Screw	.45	230	230-4200	Friction Dog Spring	.1
36A	36A-750	Lock Washer	.45	231	231-4200	Crosswind Gear	3.1
37	37-420	Rotor Cup Washer	.45	233	233-4200	Bearing Cover	2.1